



MYVANDEL

OPTIMUM CARE

350-3



«VOLVO CARECAB» THE ALL COMFORT SECURED COCKPIT

- > Cab renowned for its exceptional comfort and approved ROPS/FOPS.
- > Automatic air conditioning - Dual filter stage - Active carbon filter - Pressurization.
- > Tinted safety glass - Sun blinds on all glazed surfaces.
- > Ergonomic driver seat with integrated heater and adjustable air suspension.
- > Steering control and blade control by joystick integrated in left and right armrest.
- > Electrically adjustable and heated side view mirrors.
- > 8 LED working lights, 4 front and 4 rear.
- > Digital dashboard including all monitoring and diagnostic parameters of kinematics.
- > Audible alarm security on kinematics, air filter, hydraulic system and accidental opening of integral crankcase guard protections.
- > Radio stereo with CD player.
- > Door opening with a remote control.
- > Antitheft device with immobilizer code.

VOLVO PENTA ENGINE MATCHED TO WASTE COMPACTING

- > Turbo diesel engine to the standard Stage IIIA / Tier 3.
- > Cooling capacity optimized by hydraulic control independent of engine speed.
- > Cleaning radiators and aspiration grids by reversal direction rotation of the fan.

WHEELS EQUIPMENT

- > 4 drums with X Tips entirely covered with abrasion resistance material.
- > Simple scrapper bar on rear front wheels and double scrapper bars on rear wheels.

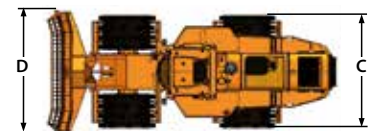
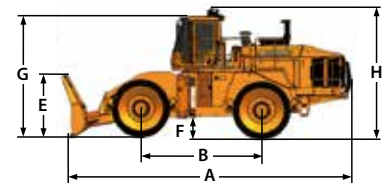
SAFETY AND MAINTENANCE

- > Reverse camera and monitor in cab.
- > Back sound alarm " Lynx cry ".
- > Integral crankcase guard protections activated hydraulically.
- > Wide access to the engine compartment and radiators.
- > Central greasing on front and rear frame.
- > Direct reading level indicators on BV circuits, hydraulic and coolant to facilitate current maintenance.
- > Compressed air system for current maintenance with 15 meters long hose.

TECHNICAL SPECIFICATIONS

Max weight	33 000 kg
Total width of wheels	400 cm
Linear compacting force	82.50 kg/cm
Engine	VOLVO PENTA - Inline 6 cylinders - Gross max power: 285 kW/388 hp Stage IIIA - Tier 3
Hydrodynamic power train	Torque converter - Power Shift - Transmission - 2 front speeds - 2 rear speeds
Axles	Front axle fixed - Oscillating rear axle: +/-7° - Wet disc service brakes
Wheels	28 X Tips per wheel - Drum Ø 1.54 m - Drum width 1 m
Front blade	Straight (standard): Width 3.80 m - Semi U (option): Width 3.60 m Height with grid 2 m
Steering	Hydrostatic steering - Joystick control - Steering angle: +/-40 grad
Fuel tank capacity	610 liters

Under our policy of continuous improvement, we reserve the right to change specifications and design without prior notice. The illustrations do not necessarily show the standard version of the machine. Non-contractual document.



METERS DIMENSIONS

A	Overall length	8.98
B	Wheelbase	3.75
C	Width over wheels	3.46
D	Straight blade width	3.80
	Semi U blade width	3.60
E	Blade height	2
F	Ground clearance	0.66
G	Height over cab	4
H	Overall height	4.24
	Wheel track	2.46



ENSEMBLE, DONNONS DE LA FORCE À VOTRE PROJET